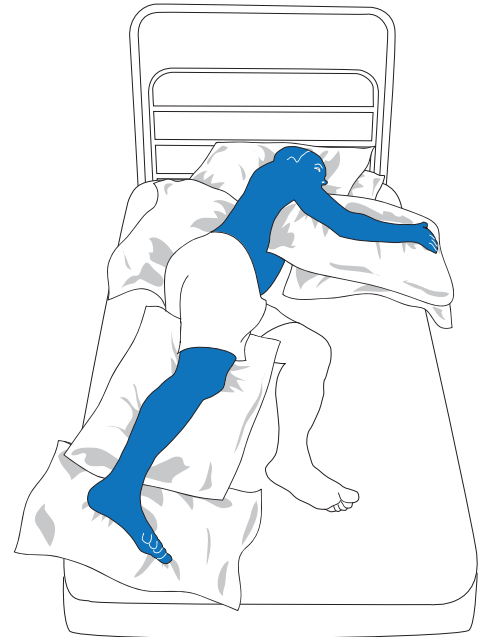


Positioning - Right Sided Weakness

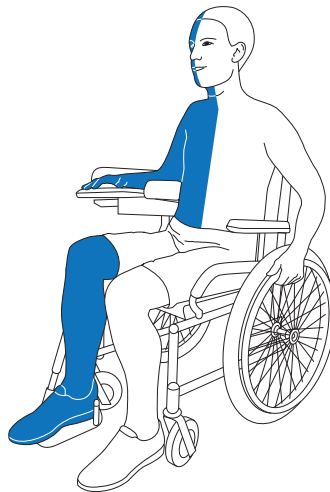
Caution: DO NOT pull on affected arm.



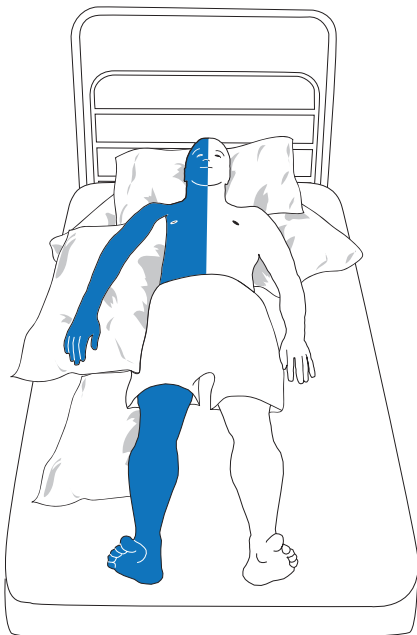
Lying on Affected Side



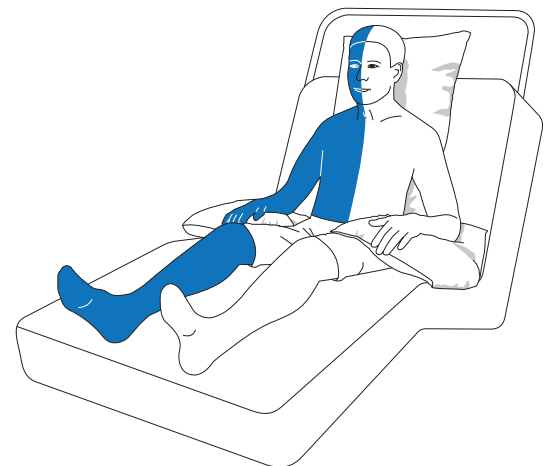
Lying on Unaffected Side



In Wheelchair



Lying on Back



Sitting in Bed

Adapted from Chest Heart & Stroke Scotland

For more copies, go online at <http://vch.eduhealth.ca>
or email phe@vch.ca and quote Catalogue No. FM.357.R721

© Vancouver Coastal Health, April 2017